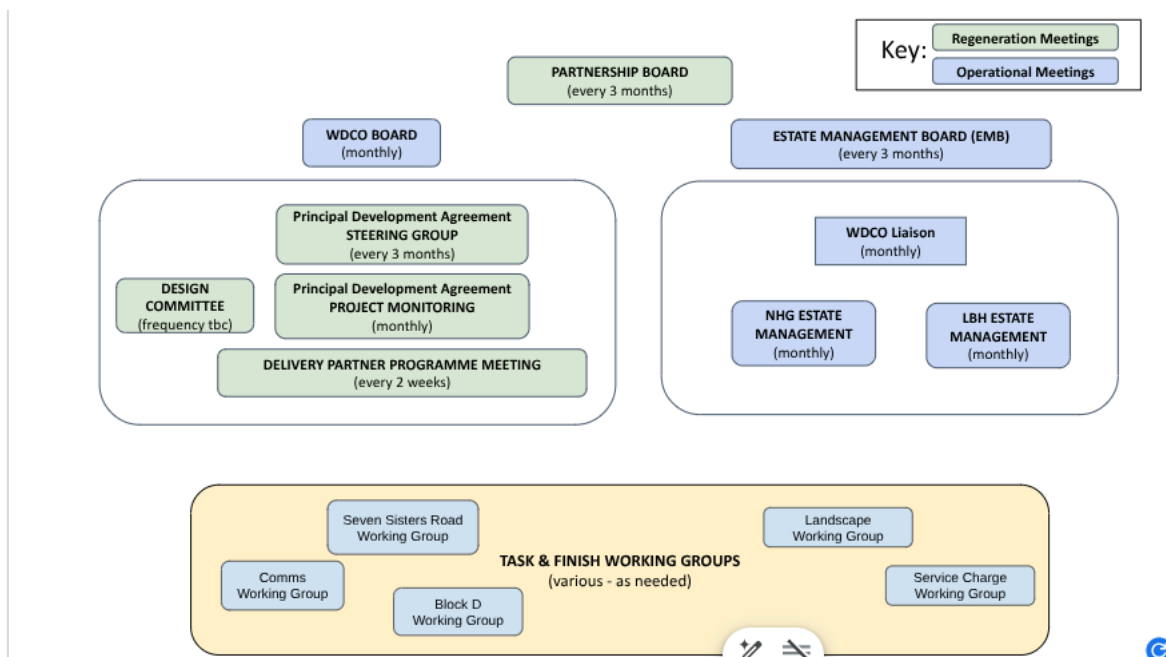


EMB Governance Update

1. Introduction

1.1 In May 2025, changes to the governance structure for Woodberry Down were agreed by Delivery Partners at the Round Table. At this meeting, the Round Table approved the implementation which of the Partnership Board (which replaced the Round Table) and Estate Management Board (which replaced the Strategic Management Board)



1.2 Whilst the EMB has been in place since June 25, it was felt that improvements could be made in relation to meeting membership - ensuring the right people attend the right meetings - and that a refresh of the meeting purpose and structure would be helpful

2. Improvements to meetings

2.1. Following a mini review held with the ITLA, NHG, and LBH EMB Board members, the following areas for improvement were identified:

- Updating board membership to include Commercial representatives e.g. BH Commercial Asset Team/Elected Commercial Representative
- Improving meeting agendas, with more targeted discussions on broad themes including: public open space maintenance, phase 4 public art, Phase 4 Service Charges

2.2 Some members felt the frequency of meetings should be reduced, however, as not all stakeholders involved in the mini review agreed, it is proposed that the meeting frequency remains the same.

2.3 The proposals were presented to the EMB on 13th April and supported by the EMB board.

3. Request for Decision

3.1 The Partnership Board are asked to endorse these recommendations

3.2 The Partnership Board approve the revised [EMB Terms of Reference](#) which includes Commercial representatives as members of the board

4. Next Steps

4.1 Agree with WDCO that their Commercial Representative is nominated to sit on the Estate Management Board

4.2 Agree with Berkeley Homes that a member of their Commercial Asset Team is nominated to sit on the Estate Management Board

