

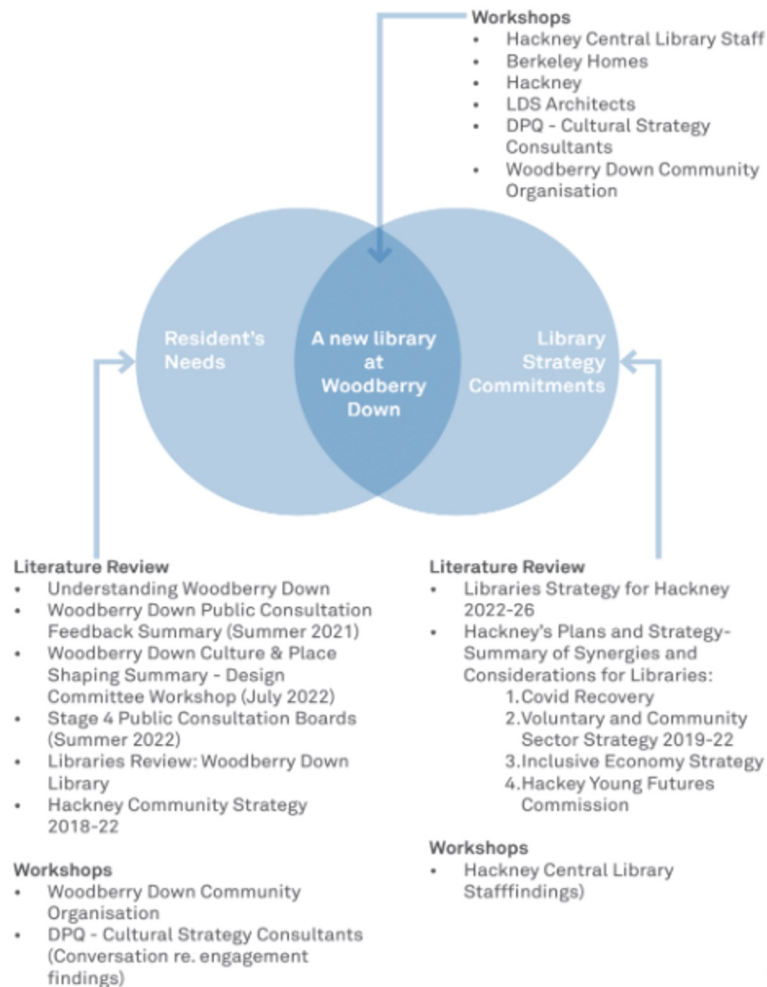
Woodberry Down Library Feasibility Study

~

Update May 2023

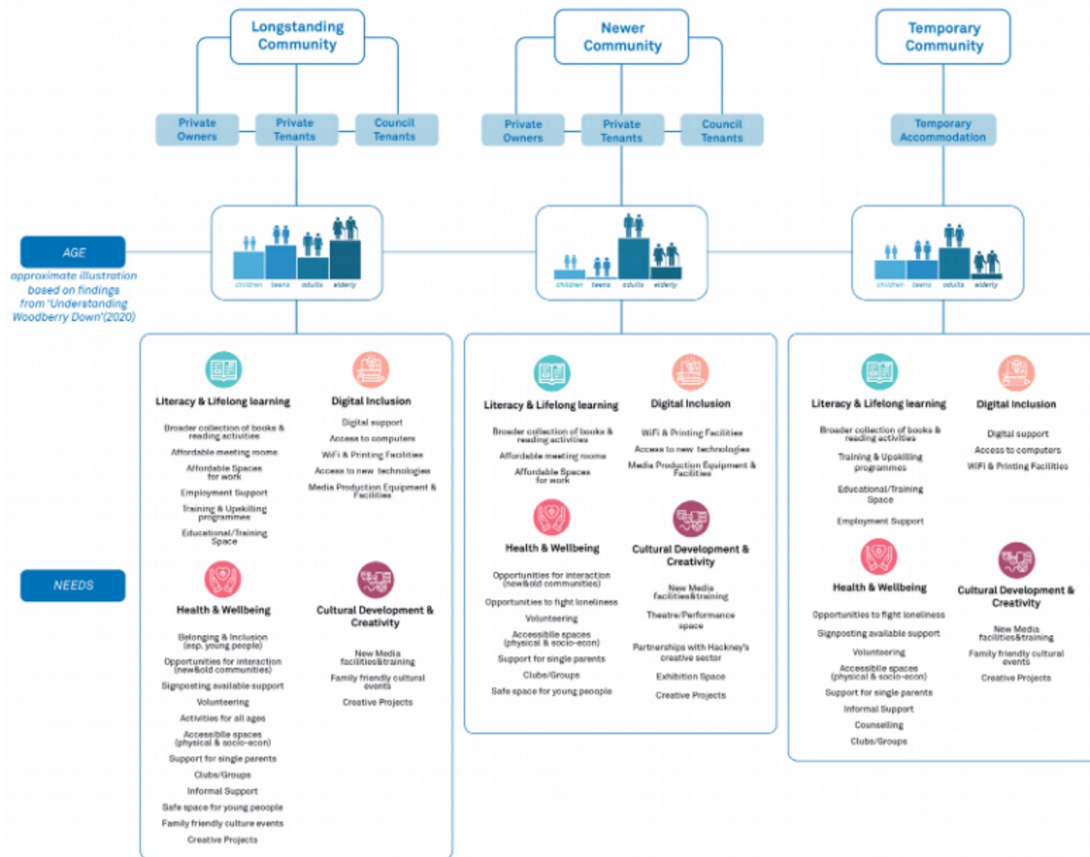
A new library in Woodberry Down?

- Hackney Library Strategy context
 - Aligns with Library Strategy commitments
 - Hub-style library: multi activity
 - Growing population in Woodberry Down
 - Existing Woodberry Down library has low footfall/constrained in providing activities and services
- Woodberry Down Regeneration
 - New public square - library offers a 'civic' use
 - Aligns with commitment in Woodberry Down to culture and heritage



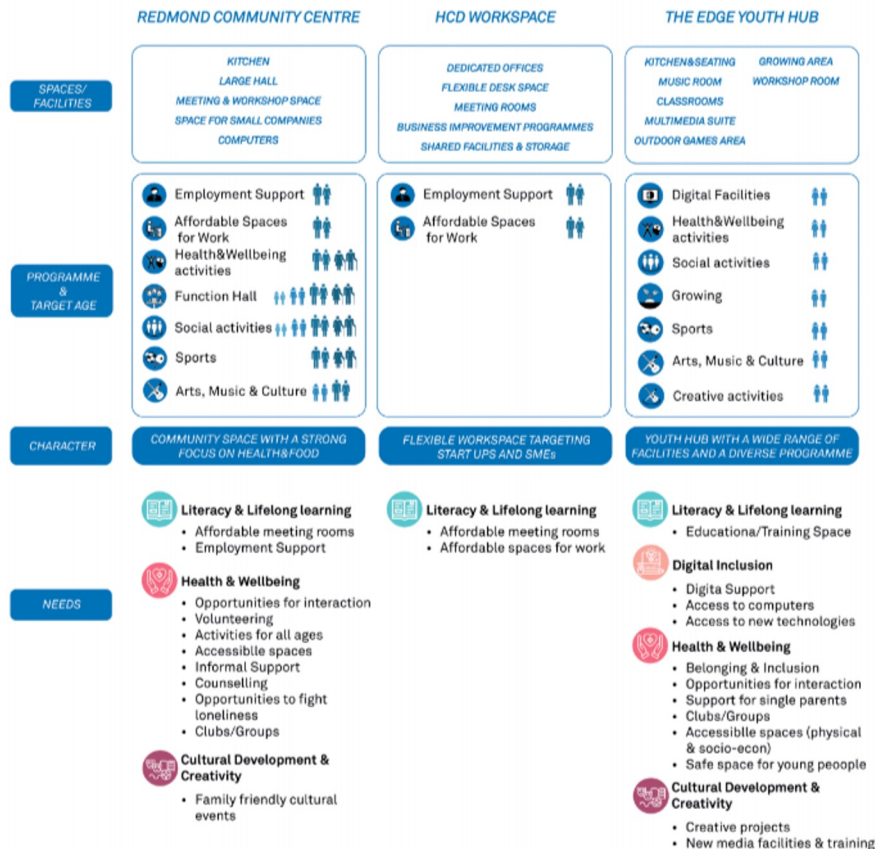
Findings - summary

Summary of needs



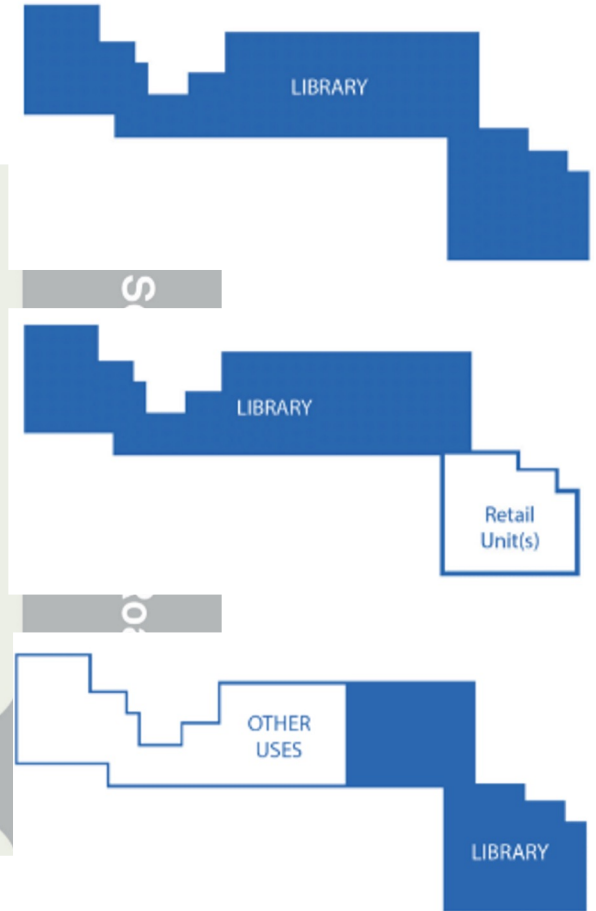
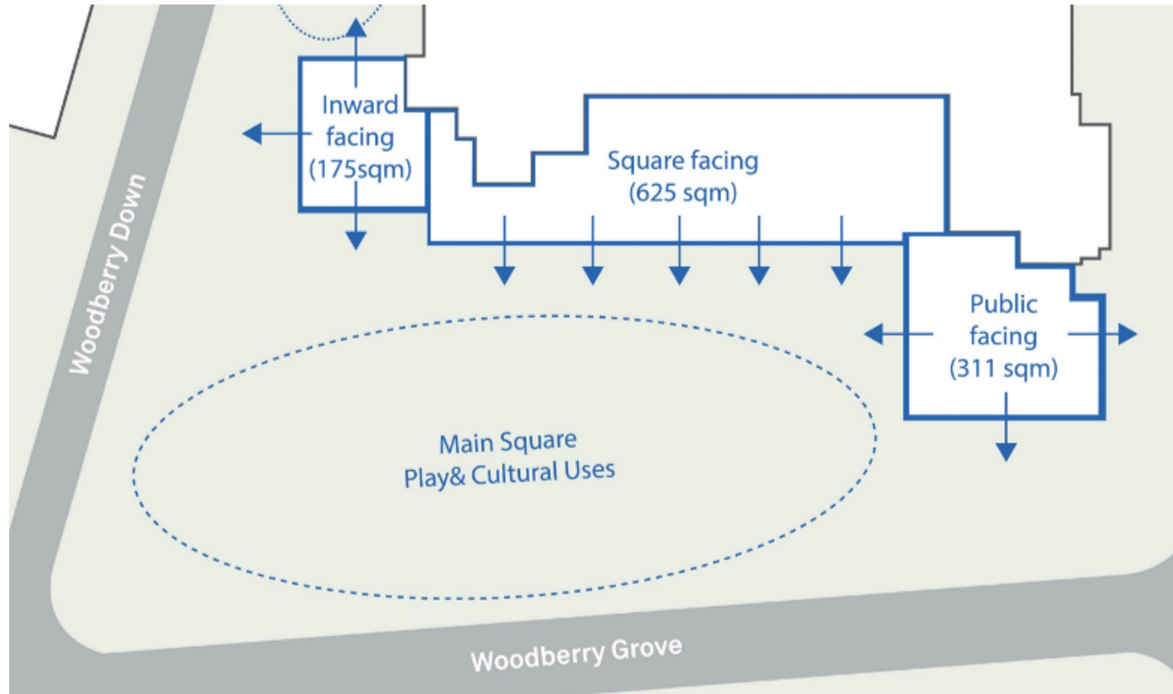
- Highlights a changing community
- Wide range of needs and 'asks' in the community
 - Study space
 - Affordable spaces
 - Cultural provision
 - Employment and training
 - Families and children

Community facilities in Woodberry Down



- Existing community facilities and activity
- Need for coordination so spaces complement
- Overall/strategic approach to delivering different activity and services in Woodberry Down
- Impact of a new library on other spaces

What size of library?

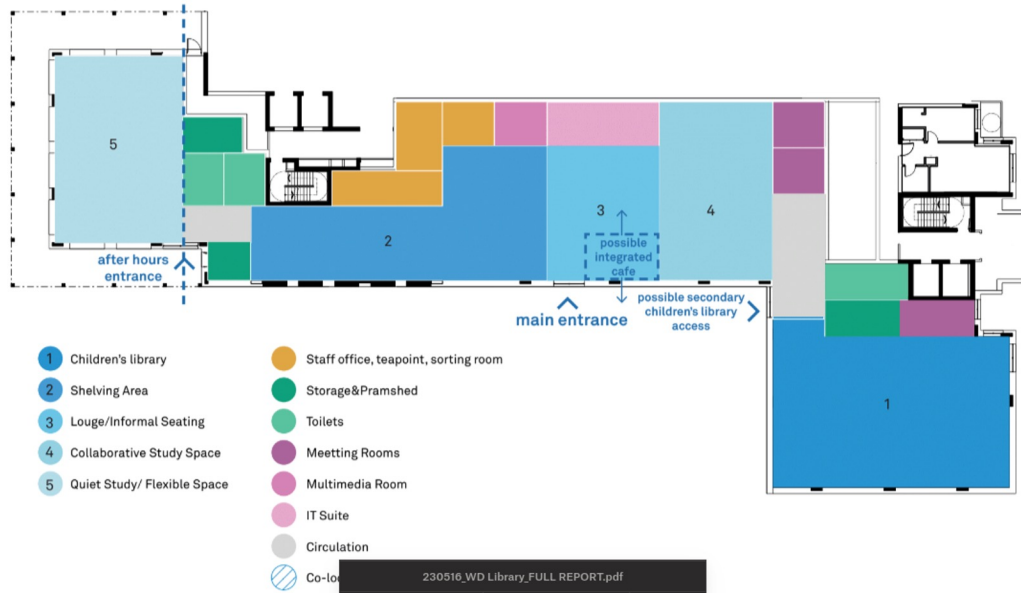


Library 'plus'

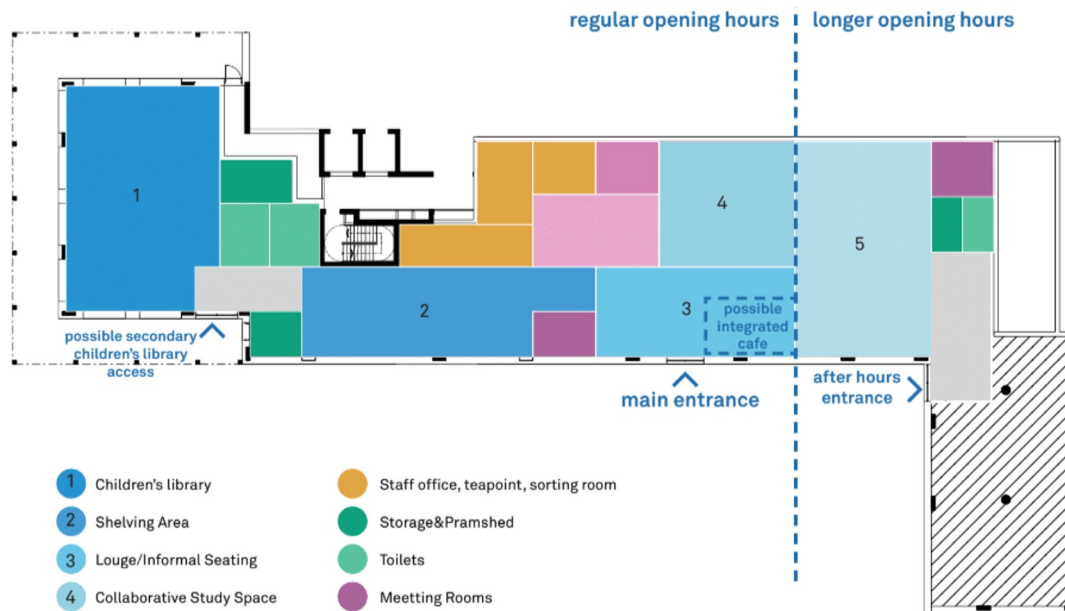
Option A: Library+

Plan

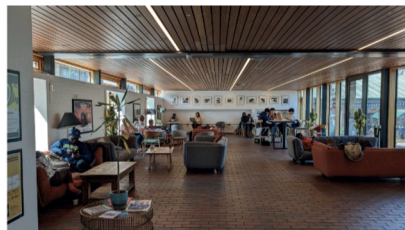
potential split with security management (eg. access card)
longer opening hours regular opening hours



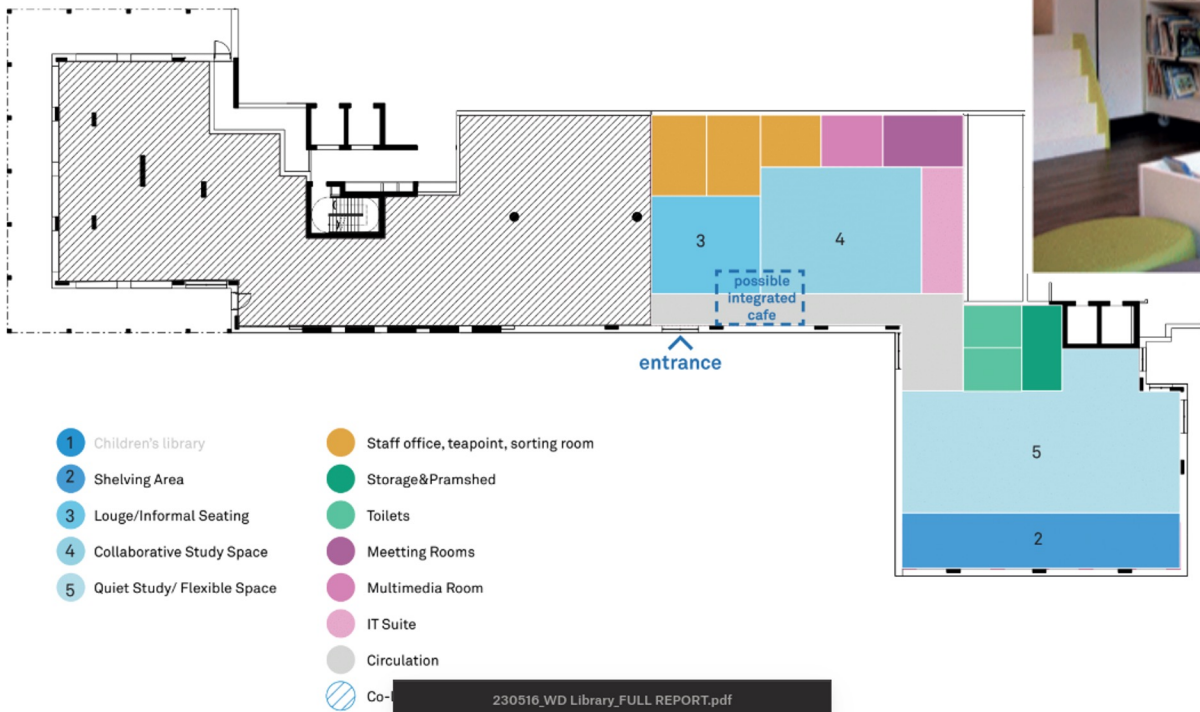
Smaller library 'plus'



- 1 Children's library
- 2 Shelving Area
- 3 Lounge/Informal Seating
- 4 Collaborative Study Space
- 5 Quiet Study/ Flexible Space
- Staff office, teapoint, sorting room
- Storage & Pramshed
- Toilets
- Meeting Rooms
- Multimedia Room
- IT Suite
- Circulation
- Other Uses



Mini-library 'plus'



Next steps

- Library Services to review findings and funding implications
- Engagement with delivery partners over best approach
- Explore findings through the Ground Floor Strategy
 - Community need
 - Coordination of community spaces
 - Evidence base to refine proposals
- Community consultation